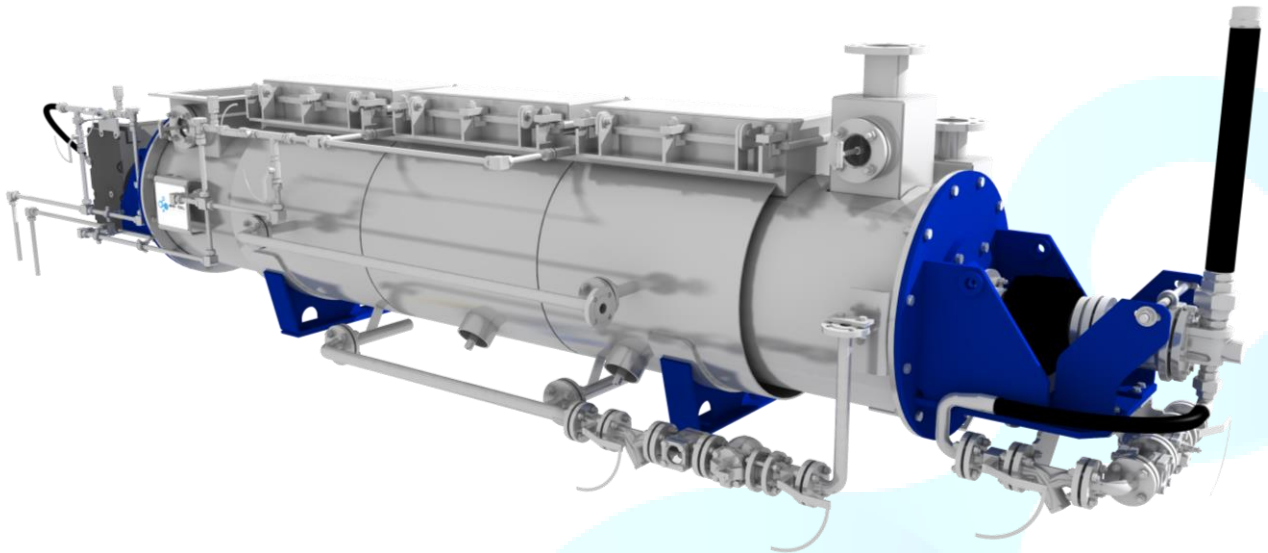


DATA SHEET AMOF-FJELL SCREW COOKER



Legacy

In 2012, the engineering department of Fjell Industries was moved to a new company called **Fjell Technology**. In 2014 Fjell Technology was merged with a company specialised in pressure vessels named **AMOF**, and our new name then became **AMOF-Fjell Process Technology**. The screw cooker has been produced since the Stord Bartz era, and has been developed and improved over the recent years. AMOF- Fjell has an ongoing production of these screw cookers.

The AMOF-Fjell Screw Cooker

(AF-TC series) is a series steam heated screw cookers for fishmeal industry. The cookers are

available within the complete range from 25 tons pr. day to 500 tons pr. day. The screw cooker is based on a well-proven rigid design.

Design features

The AMOF-Fjell Screw Cooker consist of a screw rotor with steam heated hollow flights. The screw rotor is installed inside a stator with steam jacket. The screw rotor is slowly turned using a gearmotor. Between the cooker inlet and the cooker outlet, the fish is cooked. The AF-TC series can be designed and approved according to the leading international design codes and standards (PED, ASME, JIS, GOST, DNV, Lloyds, Bureau Veritas etc.). Typical design pressure is 6 barg.



AF-TC12-8 installed in factory.

Standard range of AMOF-Fjell screw cookers

Model	Approx. ton pr. 24h	Approx. Heating surface	Overall dimensions <i>length x width x height</i>	Approx. weight	Drive unit
AF-TC2-3	50	11 m ²	5100x1100x1150	2,0 ton	1.1 kW
AF-TC3-5	75	16 m ²	6450x1100x1250	3,2 ton	2.2 kW
AF-TC6-6	150	28 m ²	8500x1200x1400	6,5 ton	5.5 kW
AF-TC9-7	200	39 m ²	9500x1800x1900	9,2 ton	7.5 kW
AF-TC12-8	300	51 m ²	10500x1800x1900	12 ton	7.5 kW
AF-TC20-11	500	85 m ²	12800x2200x2300	20 ton	15,0 kW

Note: Other drier sizes can be available by increasing/decreasing the number of discs on the rotor. Technical data given as indication only.